

# CROUZET TOUCH QUICK START



# SUMMARY

- Hardware and software required
- Crouzet Touch software installation
- Connecting the hardware for program transfer
- How to open a Crouzet Touch program
- Program transfer
- Connecting the hardware for use
- Program example

# HARDWARE AND SOFTWARE REQUIRED

## Hardware



CT104 or CT107



CTP104-E, CTP107-E or CTP110-E



em4



USB Interface  
88 980 110



Modbus RS485  
Interface  
88 980 120

## Cables

### Programming



MicroUSB  
25526005



Ethernet cable  
88 970 508



USB cable  
88 980 170

### Communication



Ethernet cable  
88 970 508



Modbus cable  
88 980 171  
88 980 172

## Software

Crouzet Touch Soft  
Version  $\geq$  5.05.02.057

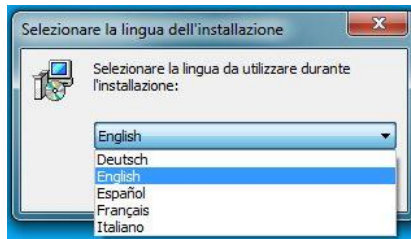
em4 Soft  
Version  $\geq$  1.2.07

# CROUZET TOUCH SOFTWARE INSTALLATION

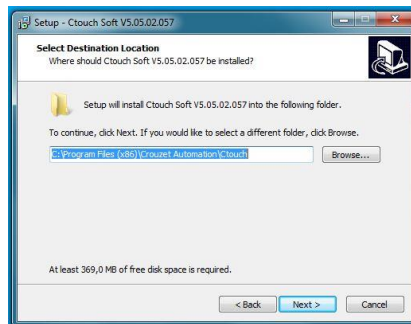
# Installing Crouzet Touch software



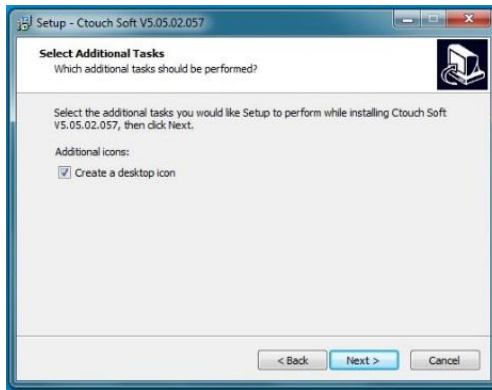
Double click on setup.exe to launch software installation



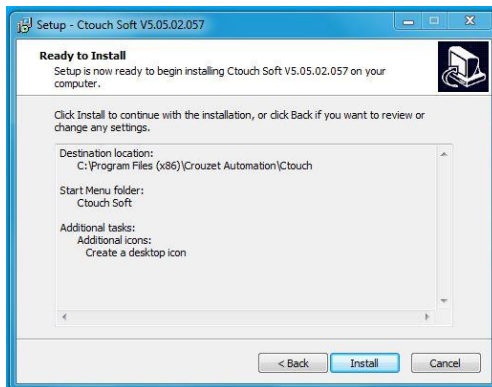
Select the installation language, this will also set the Crouzet Touch soft language



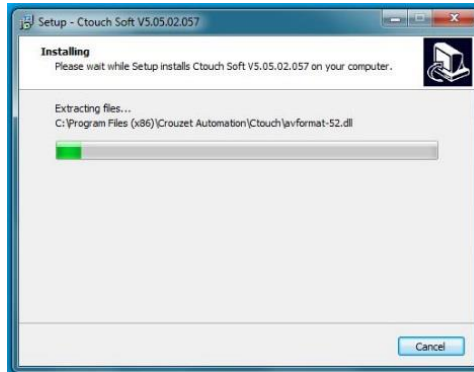
Select the destination path and folder for Crouzet Touch software



Select - *Create a desktop icon*



Click on *Install* to start installation



Files will be copied to the selected folder



At the end of the installation process click on *Finish*



# CONNECTING THE HARDWARE FOR PROGRAM TRANSFER

- Program can be transferred to the Crouzet Touch using a USB-microUSB cable (Crouzet Touch Essential) or an ethernet cable (Crouzet Touch Performance).
- Program transfer with USB does not require any further settings as the USB driver is installed during the Crouzet Touch soft installation.
- Program transfer with ethernet requires the configuration of the IP addresses of the PC and Crouzet Touch. The following pages show how to set the IP addresses of both devices for Windows 7.

- Setting the IP addresses of the Crouzet Touch and PC

In order to allow the Crouzet Touch and a PC to communicate, they have to be in the same local network. Certain IP address ranges are reserved for local networks.

In our example we will use:

IP address Crouzet Touch - 192.168.100.1

IP address PC - 192.168. 100.10

Subnet mask - 255.255.255. 0

Gateway - 192.168. 100 . 0

**Subnet mask and Gateway have to be the same in the Crouzet Touch and the PC !**

# Setting the IP address on Crouzet Touch

- Setting the IP address of the Crouzet Touch for CTP104-E and CTP107-E\*



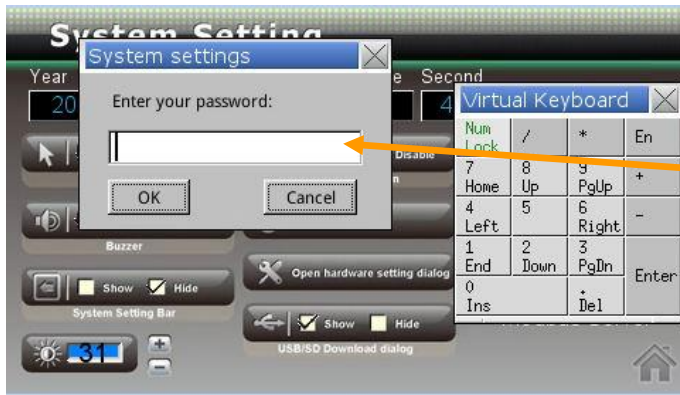
Click on the tool icon on the home page of the CTP104-E or CTP107-E



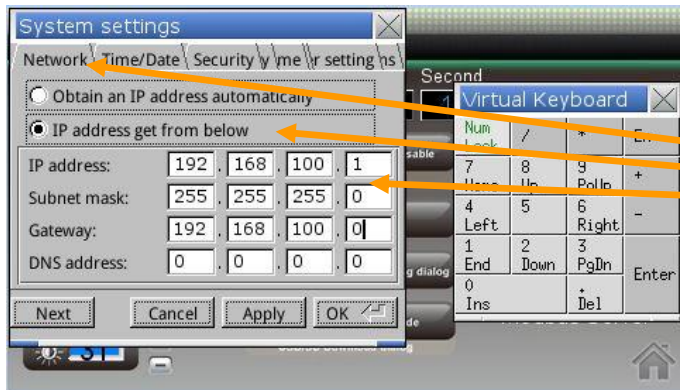
Click on *Open hardware setting dialog* button

\*CTP110-E on LAN 2 is already set to IP 192.168.100.1 by default,

- Setting the IP address of the Crouzet Touch for CTP104-E and CTP107-E\*



Enter default password 111111 using the virtual keyboard on the Crouzet Touch and press the OK button



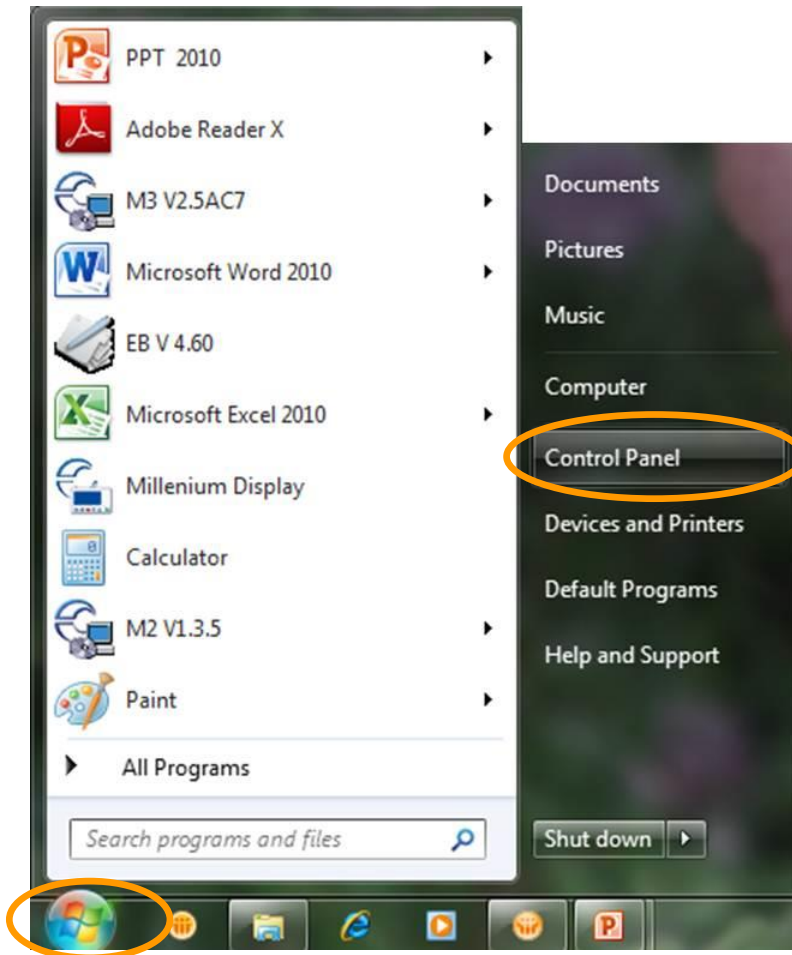
Select the *Network* tab, select the option *IP address get from below*, then enter the IP, subnet mask and gateway as in the picture.

Click on *Apply* button and *OK*

\*CTP110-E on LAN 2 is already set to IP 192.168.100.1 by default,

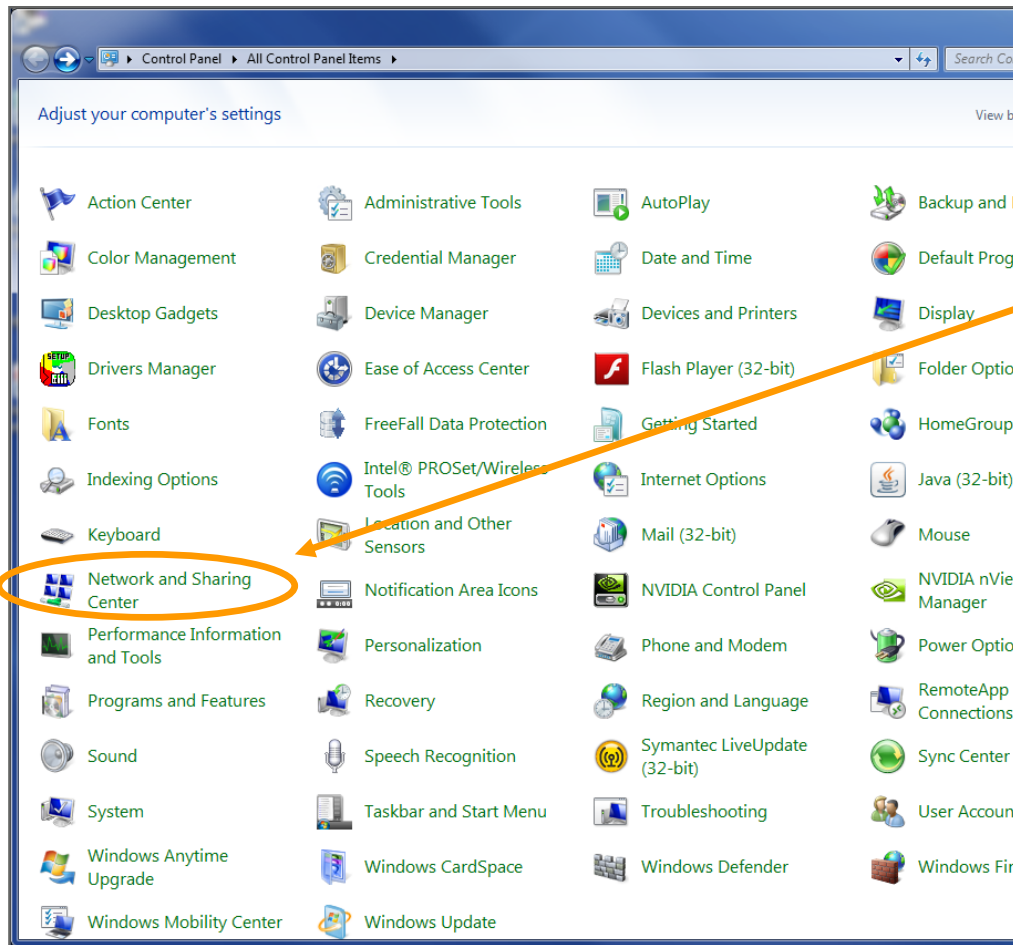
# Setting the IP address on PC

- Setting the IP address on a PC under Windows 7



Click start, then Control Panel

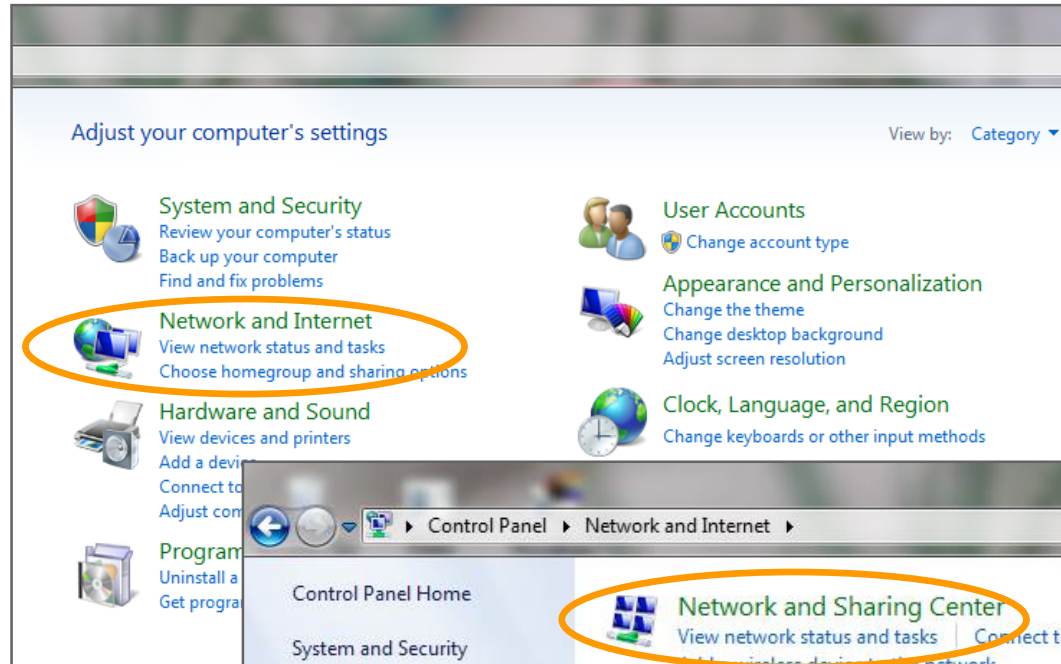
- Setting the IP address on a PC under Windows 7



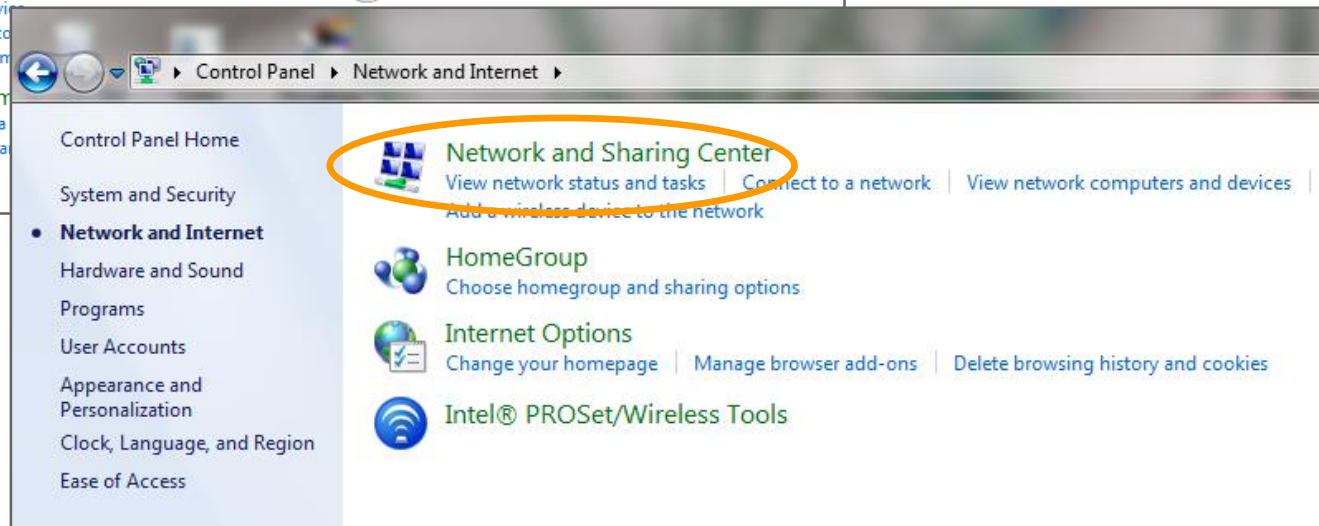
If you are on *View Icons* click on *Network and Sharing Center* in the window that opens

# Setting the IP address on PC

- Setting the IP address on a PC under Windows 7

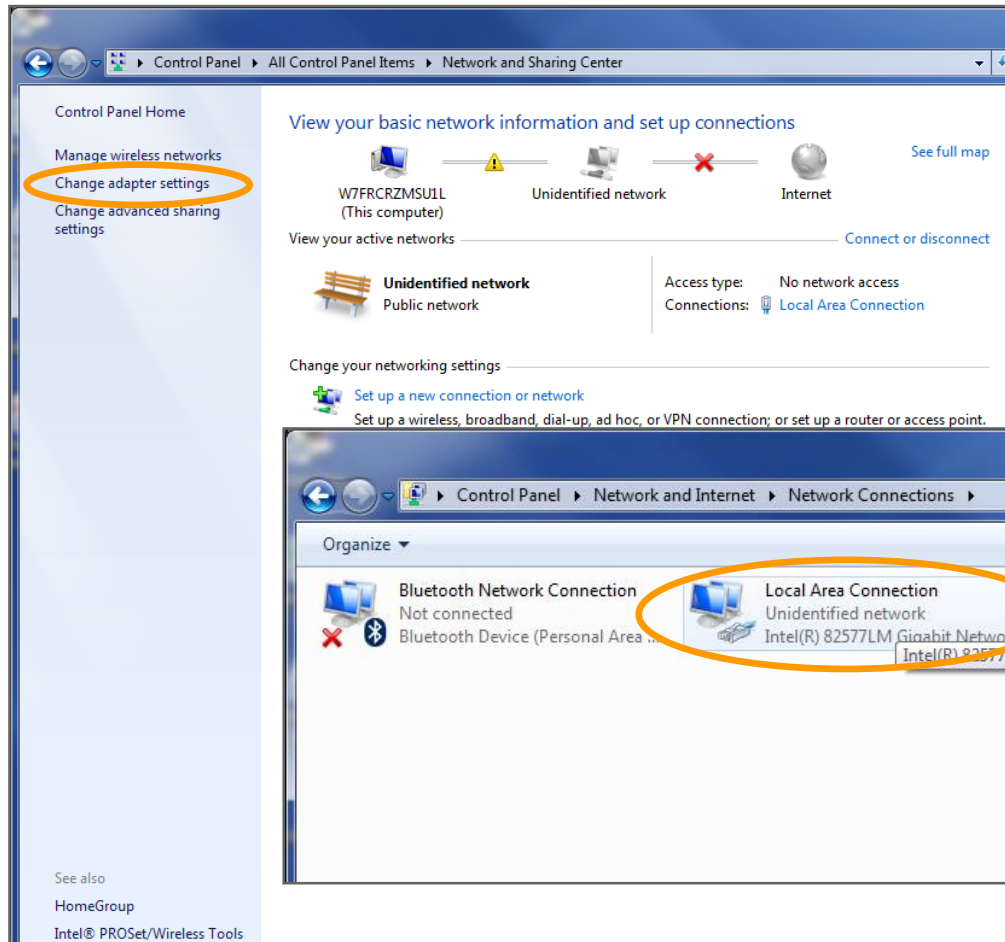


If you are on *View Category* click on *Network and Internet* in the window that opens, this will open another window with *Network and Sharing Center*





- Setting the IP address on a PC under Windows 7

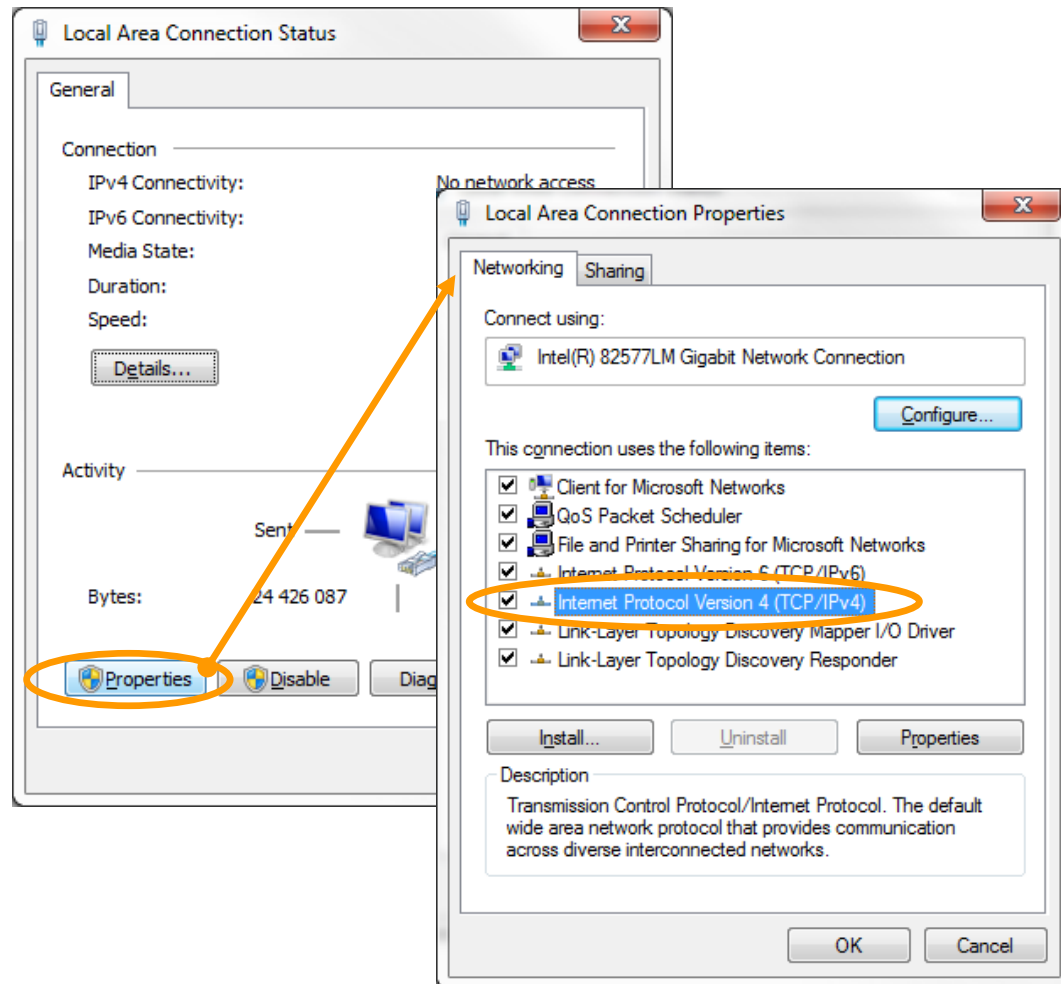


In *Network and sharing center* click on *Change adapter settings*

In the next window click on *Local Area Connection*

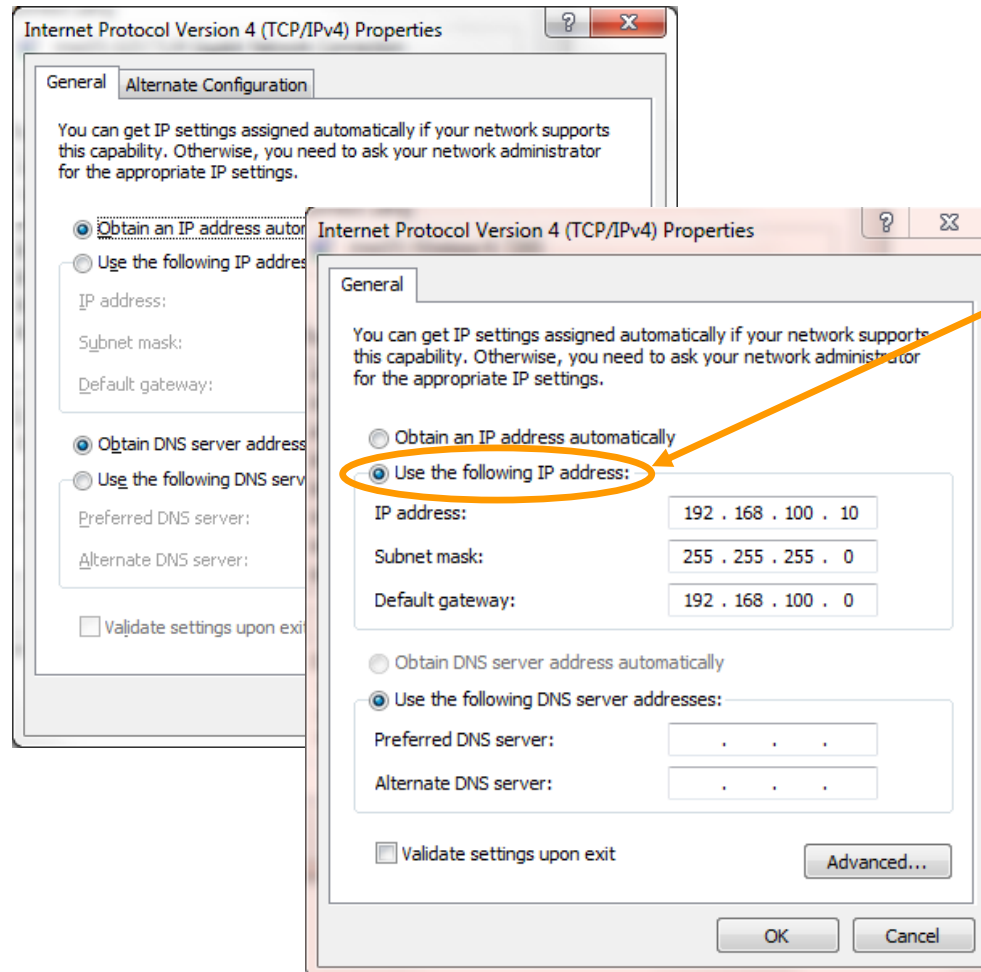
# Setting the IP address on PC

- Setting the IP address on a PC under Windows 7



Click on *Properties*, then double click on *Internet Protocol Version 4*

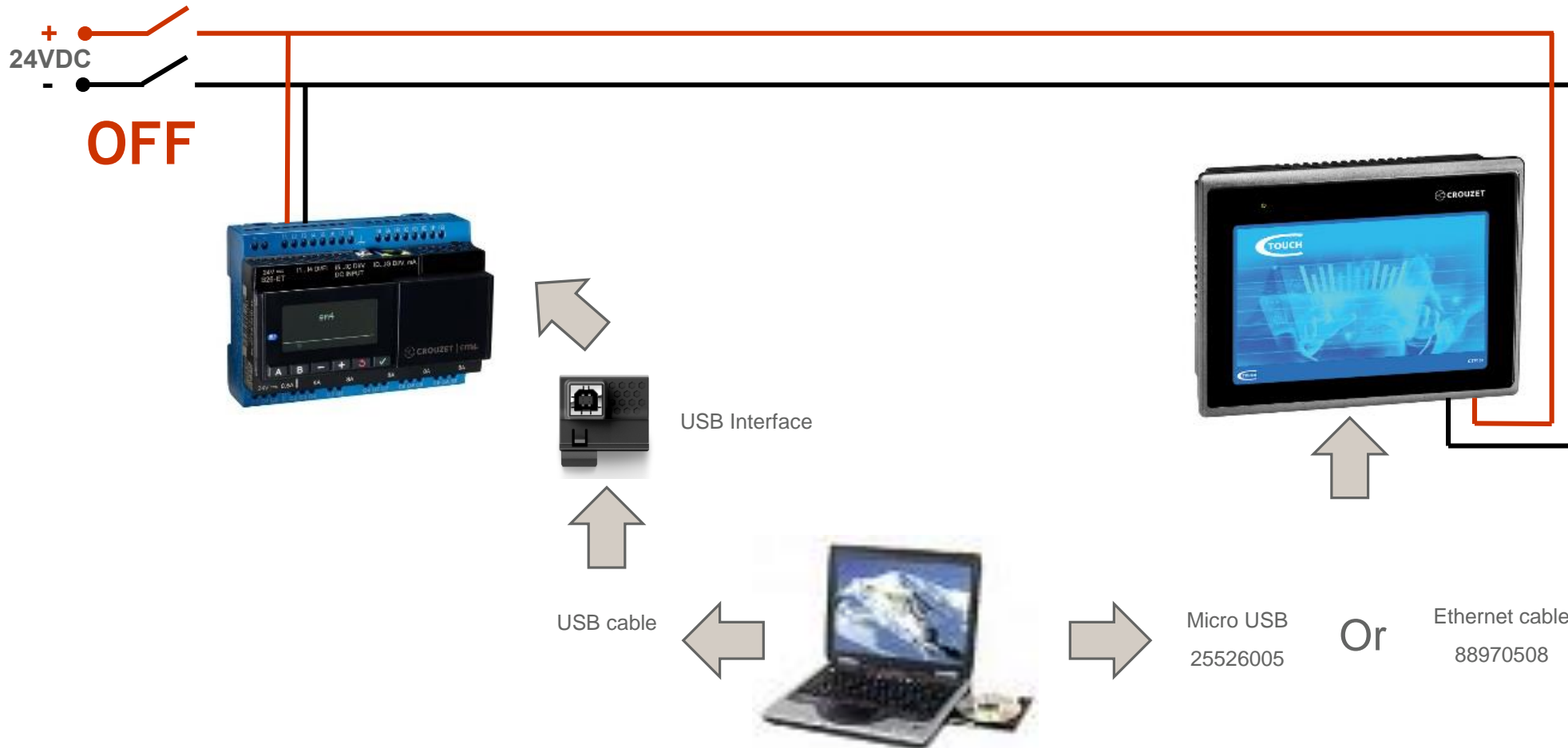
- Setting the IP address on a PC under Windows 7



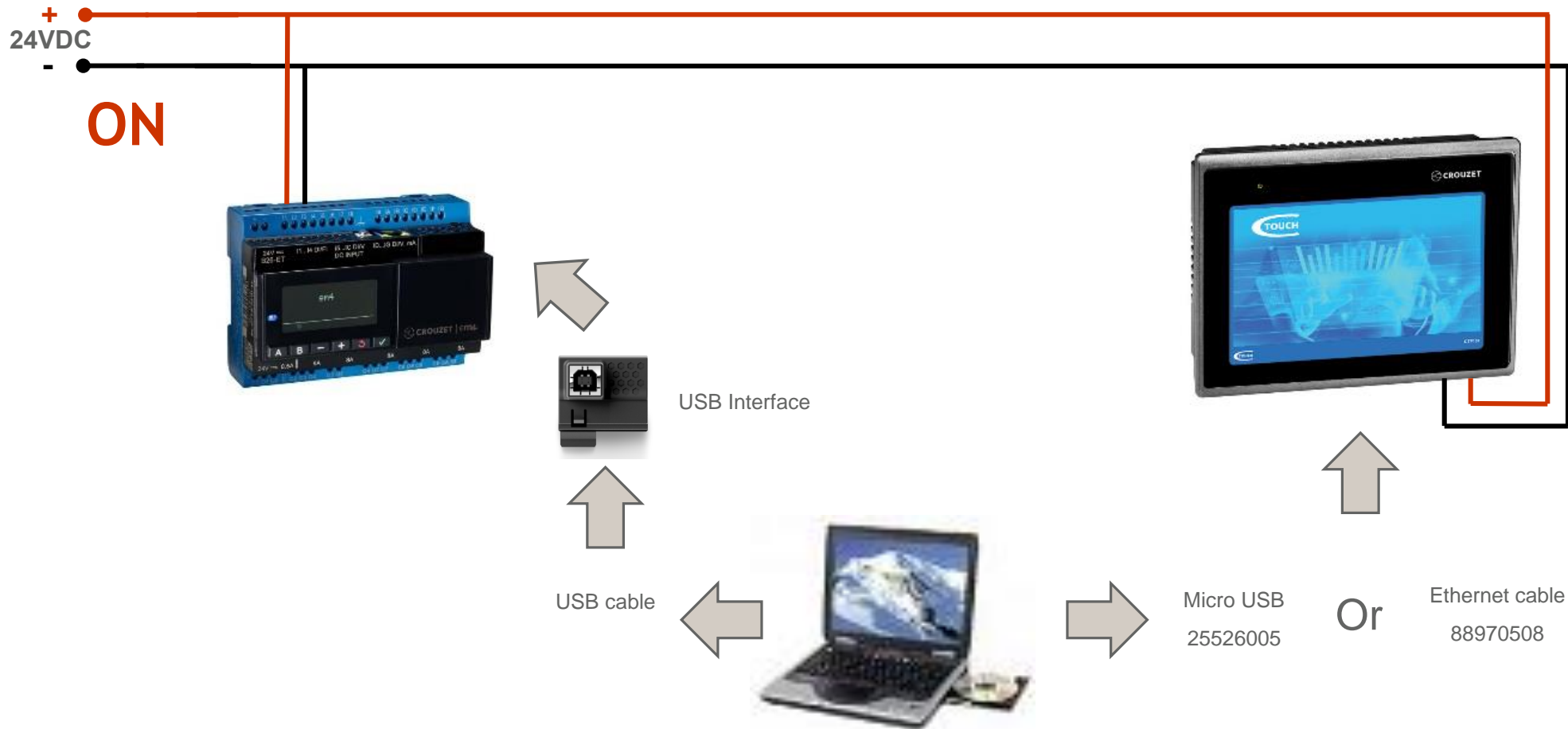
Tick Use the following IP address then enter the *IP address*, *Subnet mask* and *Default gateway* as shown

# Wiring for USB and Ethernet program transfer

- Wiring for program transfer



- Program transfer



# HOW TO OPEN A CTOUCH PROGRAM

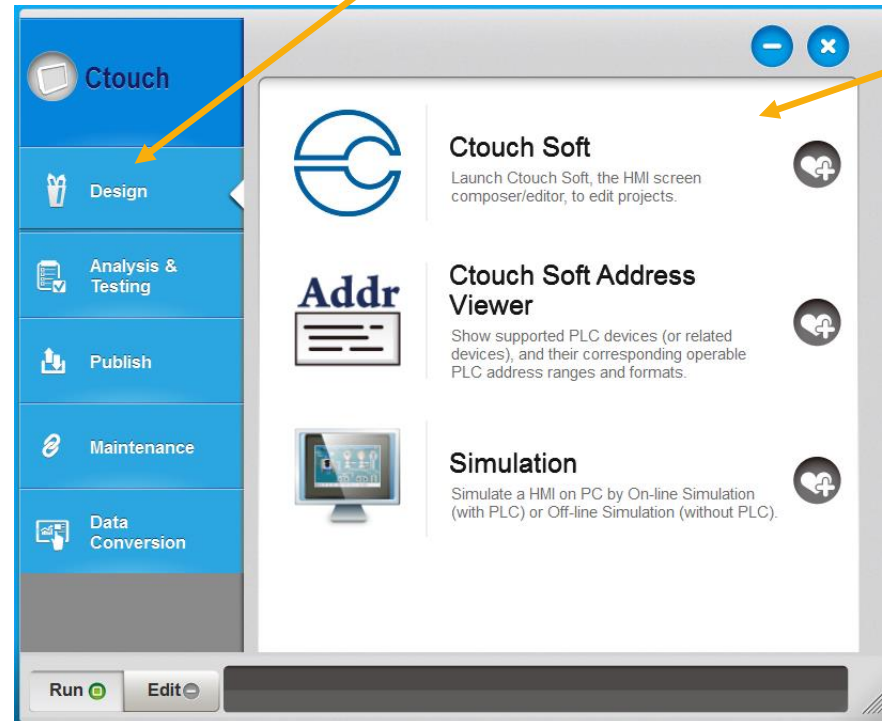
- Touchscreen programs have an *.empt*, *.exob* or *.ecmp* extension:
  - *.ecmp* files are compressed files which include libraries used in the project
  - *.exob* files are compiled files
  - *.empt* files are project files

In order to open *.exob* and *.cmp* files they need to be treated first

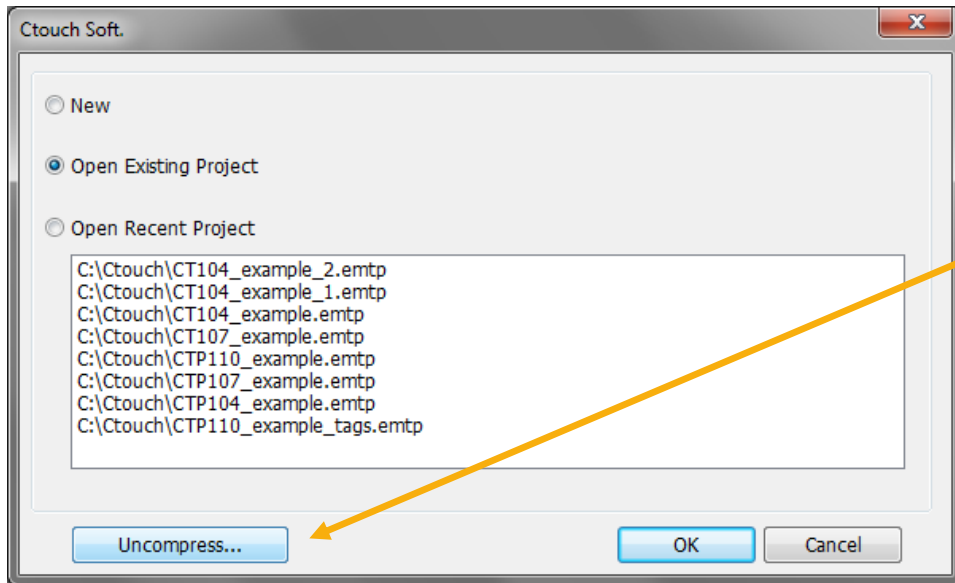
Some example programs for em4 and Crouzet Touch are provided together with this Quick Start guide. Complete list is available at the end of the document in *Program Example* chapter

# How to open a Crouzet Touch program

- Launch Utility Manager, double click on the Utility Manager on your desktop
- From the Utility Manager window select the Design tab on the left and then click Crouzet Touch Soft

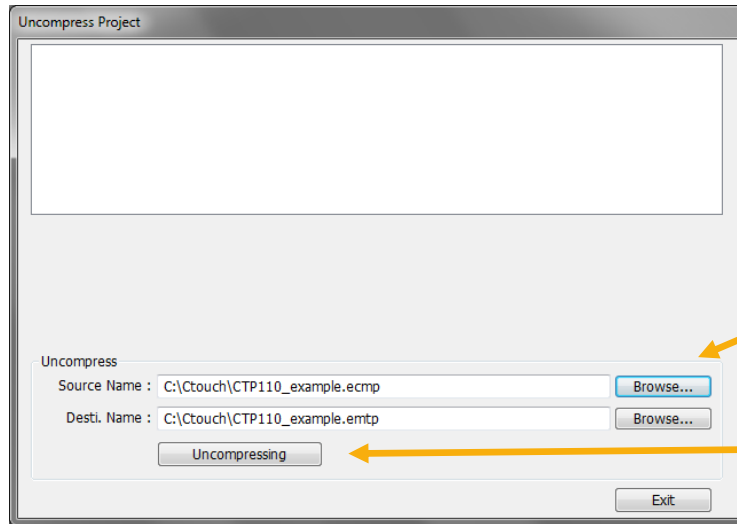






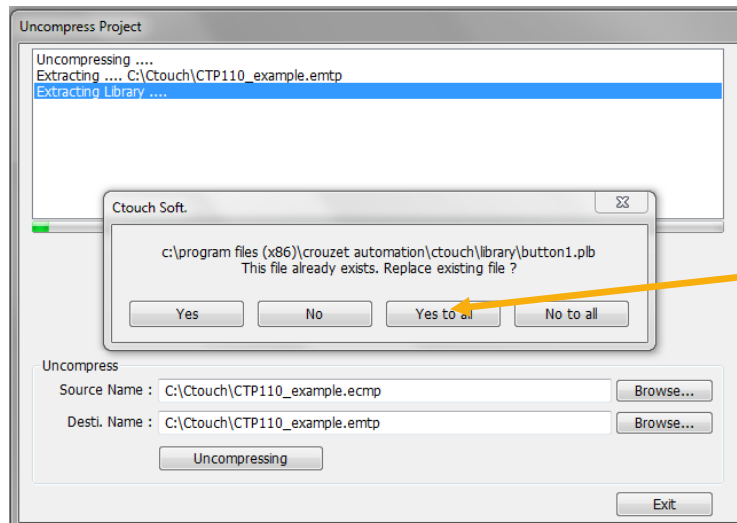
Examples provided with quickstart are compressed .ecmp files, click on *Uncompress*

# How to open a Crouzet Touch program



Browse to the .ecmp files in Source Name and define where it has to be saved in Dest. Name then click Uncompressing.

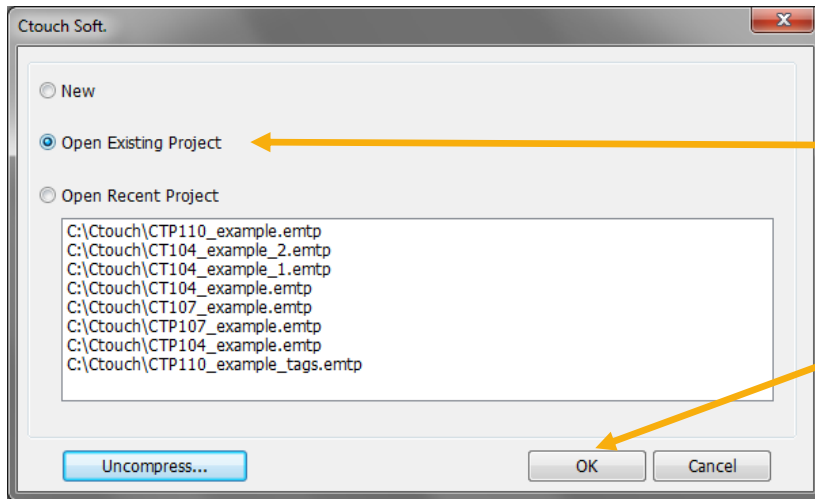
The program will create a project file in the destination folder and add all the libraries found in the compressed file.



Some libraries maybe duplicated, program will ask you if you want to replace them, click on *Yes to all*.

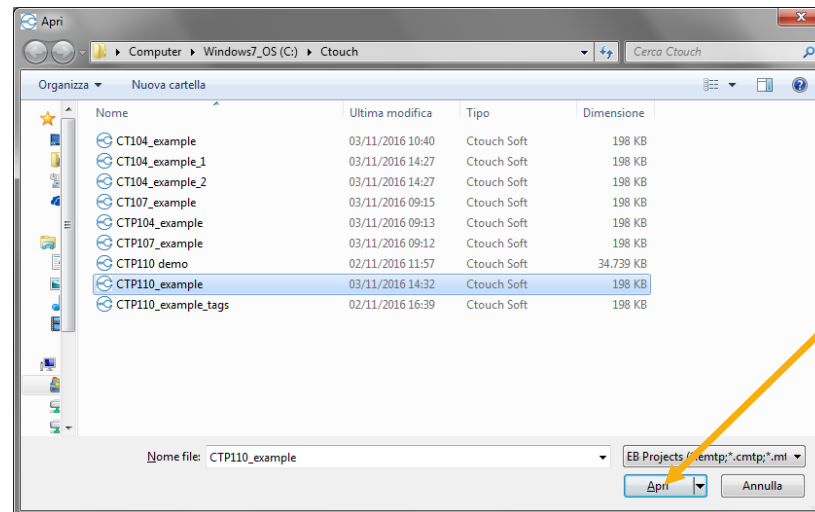
When the process is complete click on *Exit*

# How to open a Crouzet Touch program



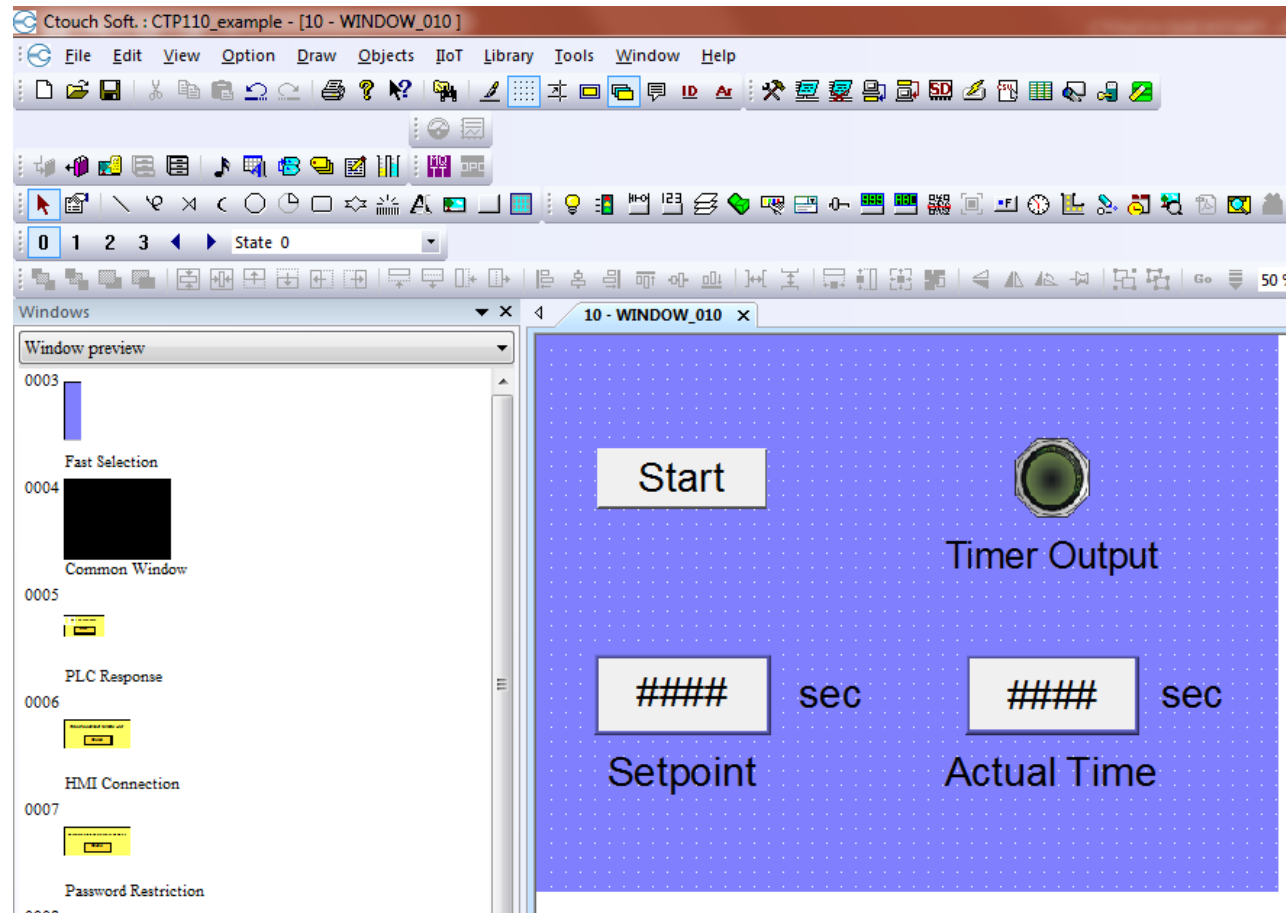
Select *Open Existing Project*  
click on *OK* and browse to  
the file you have just  
uncompressed

Then click *Open*

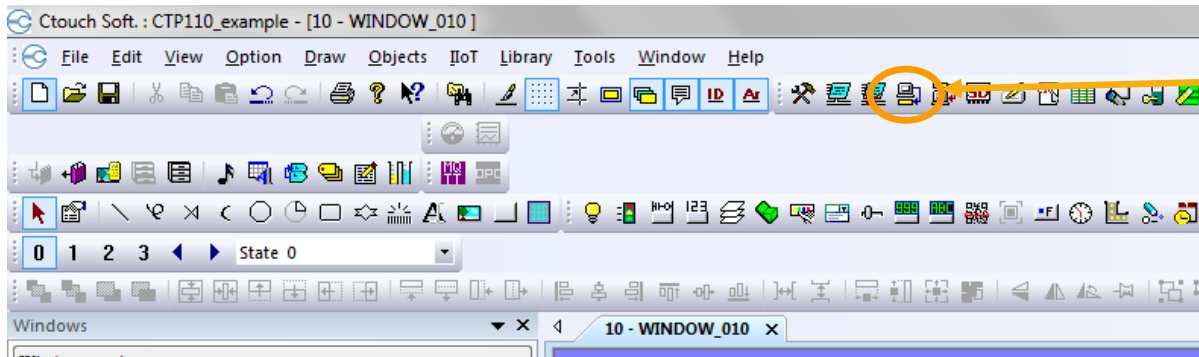


# How to open a Crouzet Touch program

- Once the program has been loaded in Crouzet Touch soft you should see the following:



# How to open a Crouzet Touch program

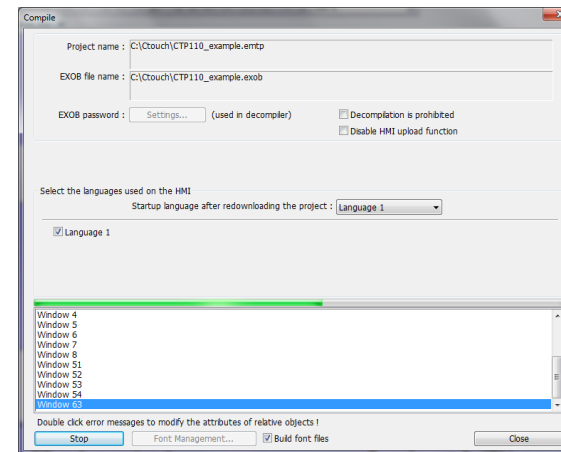
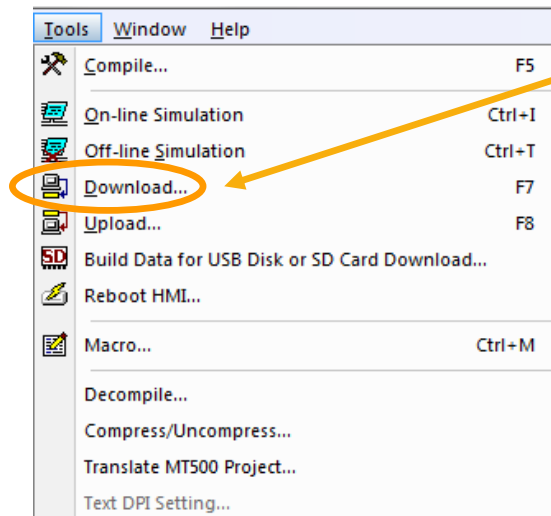


Click on the icon *Download*

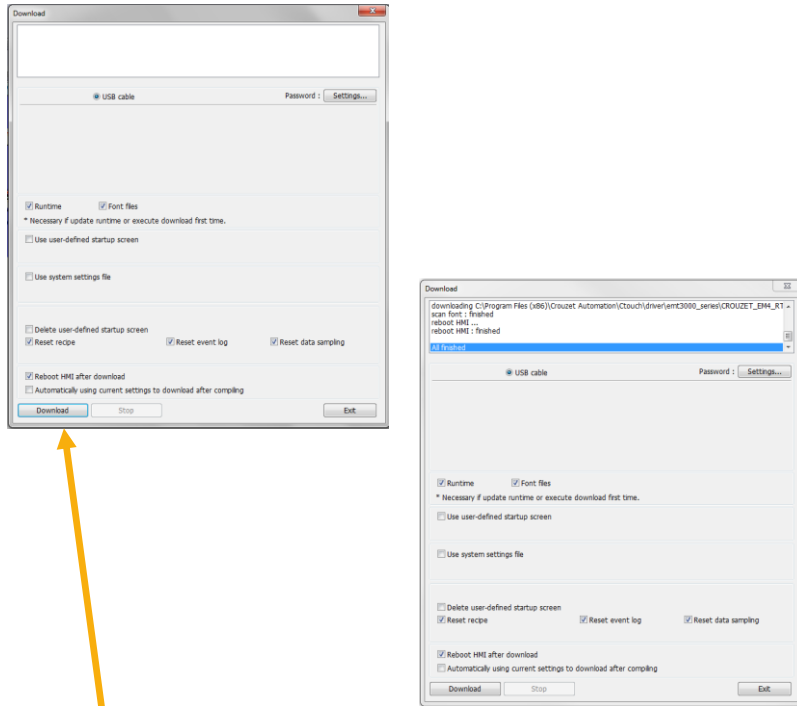
Or

Open *Tools* and select *Downloads*

Before downloading, project is compiled and checked for errors

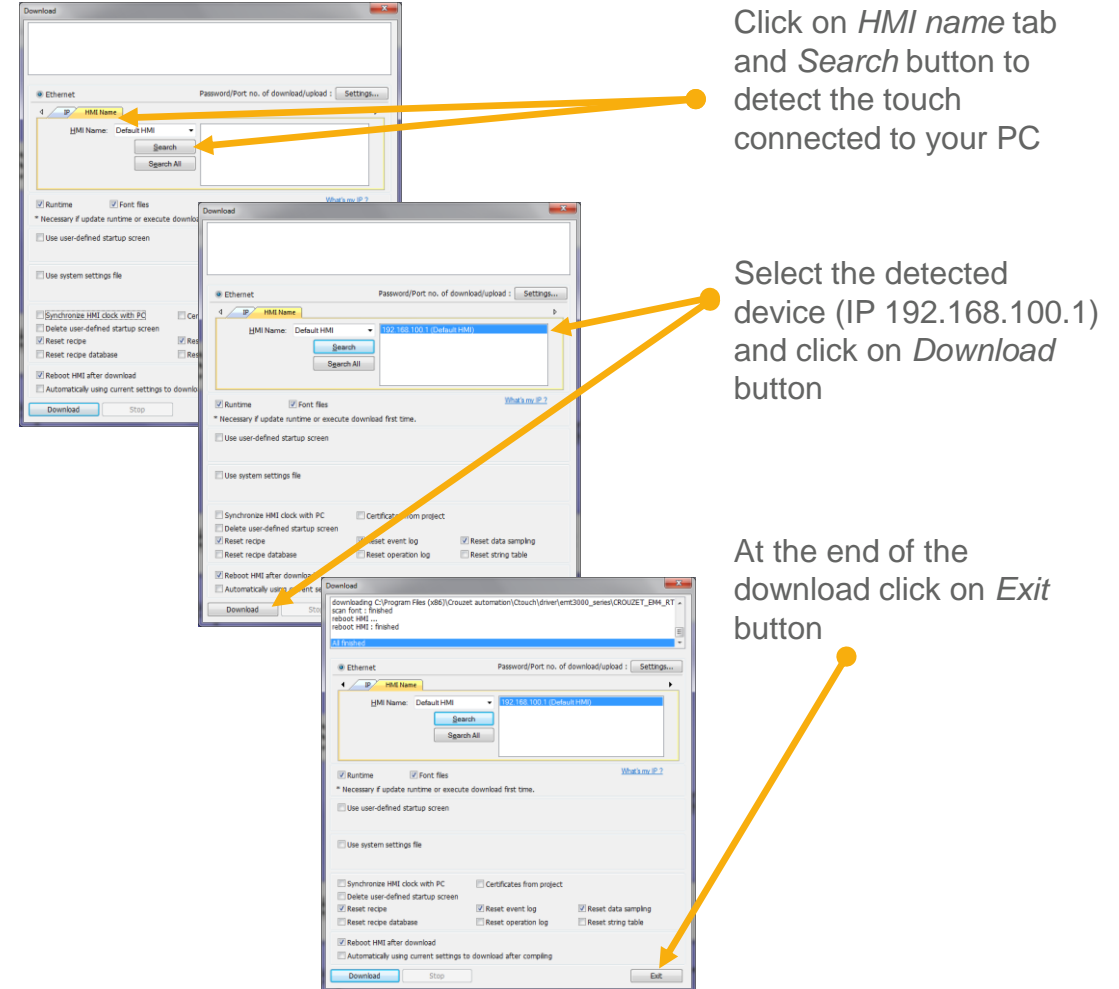


## Download by USB



Click on *Download* button,  
at the end of the download click on *Exit*

## Download by Ethernet



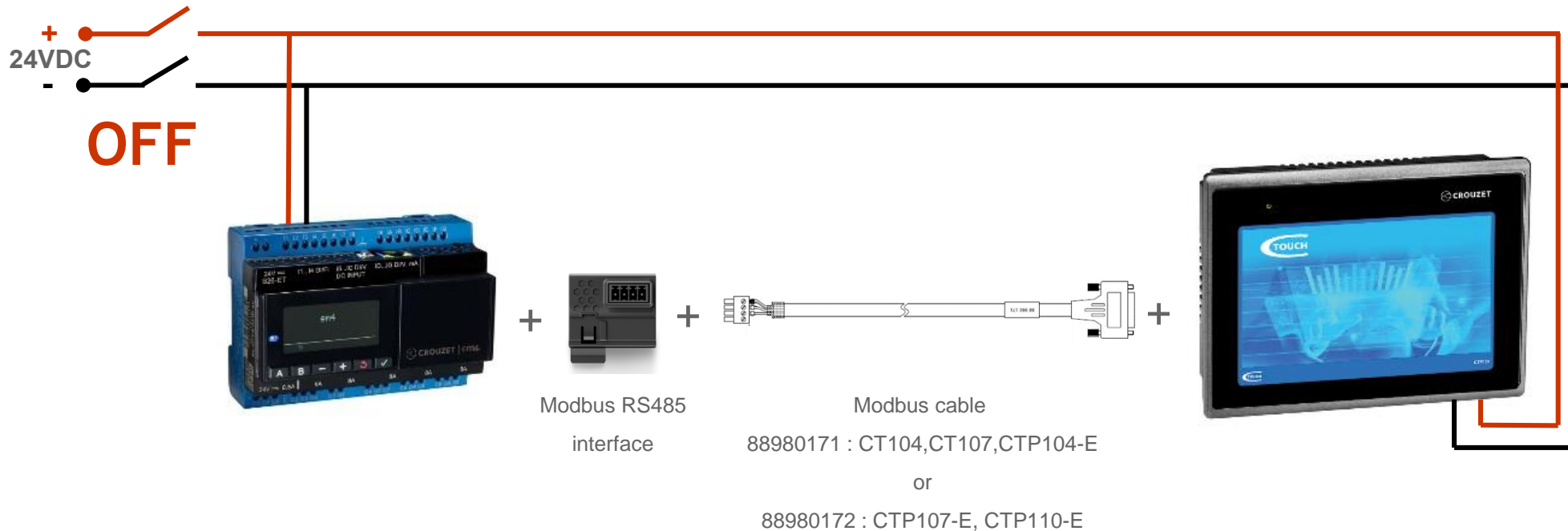
Click on *HMI name* tab  
and *Search* button to  
detect the touch  
connected to your PC

Select the detected  
device (IP 192.168.100.1)  
and click on *Download*  
button

At the end of the  
download click on *Exit*  
button

# CONNECTING HARDWARE FOR USE

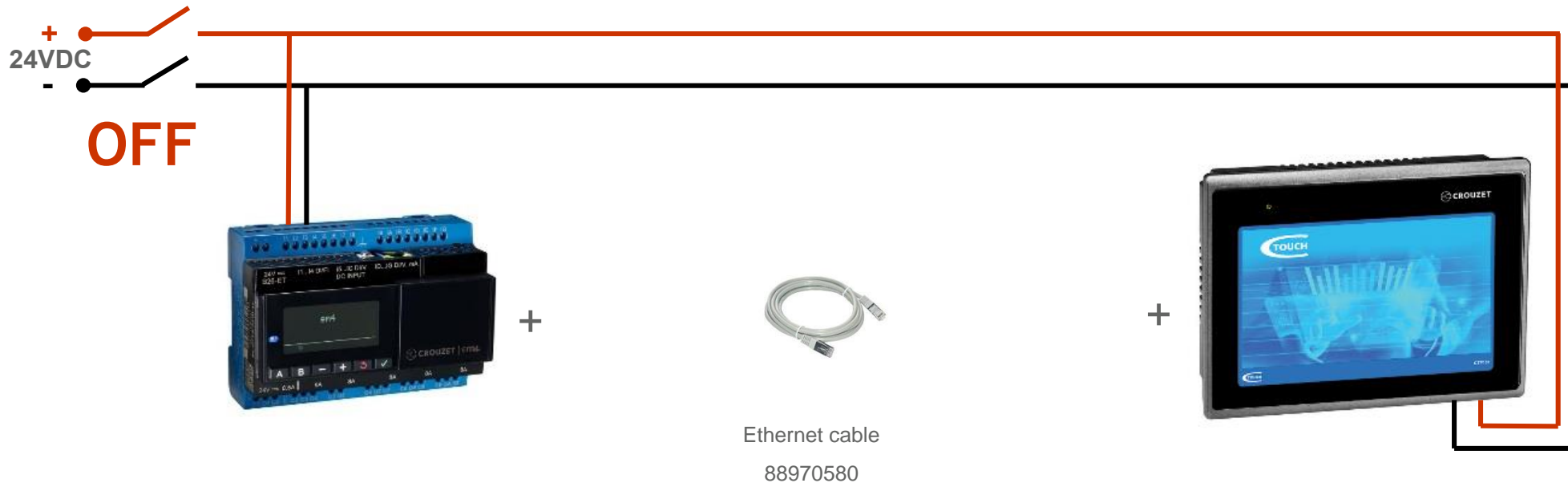
- Wiring for em4 local, alert and remote using modbus interface



Disconnect power and insert the modbus interface in the em4, connect the modbus cable between the em4 and the Crouzet Touch then switch on power. Data exchange between the two devices will start



- Wiring for em4 ethernet using ethernet cable

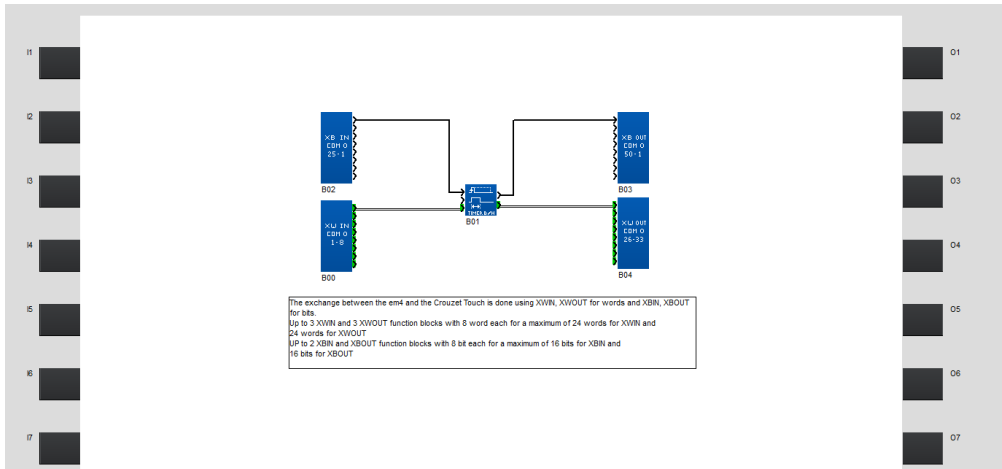


Disconnect power connect ethernet cable between the em4 and the Crouzet Touch then switch on power. Data exchange between the two devices will start

# PROGRAM EXAMPLE

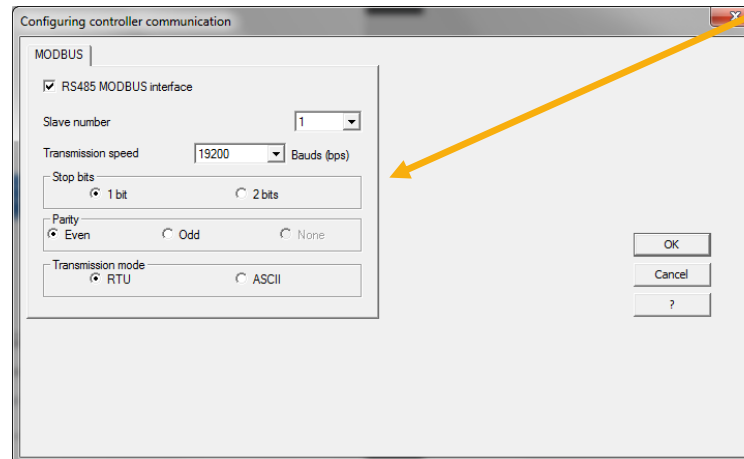
- Sample programs for different type of Crouzet Touch and em4 are available together with this Quickstart guide
  - em4 programs:
    - em4local\_example.pm4
    - em4alert3G\_example.pm4
    - em4remote\_example.pm4
    - em4ethernet\_example.pm4
  - Crouzet Touch programs (compressed file):
    - CT104\_example.ecmp
    - CT107\_example.ecmp
    - CTP104\_example.ecmp
    - CTP107\_example.ecmp
    - CTP110\_example.ecmp

- em4 program example



Program description: timer is started by a bit written by the Crouzet Touch on XBIN and time duration is set by the Crouzet Touch with XWIN. The Crouzet Touch is also reading the timer output from XBOUT and the current time from XWOUT.

Modbus settings (speed,parity,stop bits) are the same used on the Crouzet Touch.



**THANK YOU  
FOR YOUR ATTENTION**